

## Scrappy Baby Bib pattern



**\*\*Important note:** There are NO seam allowances on this pattern.

Overlap the two halves, lining up neck hole and sides, tape together, and cut the pattern ON the dotted line.

To make bib:

Cut two rectangles of fabric, about 12 x 14". One is the front, and can be pieced with stripes or whatever you want, the other is the lining. Stack the two rectangles right sides together. Lay the pattern on one side (lining is easier if the other is pieced) and trace the pattern. Stitch on the line, starting at one mark on the bottom and going all the way around to the other mark. Backstitch at both ends.

Trim to approximately a 1/4" seam allowance, but since it's already stitched, it's not necessary to be accurate! Clip the neck hole and notch the outside curves. Turn right side out, press, and topstitch the bottom hole closed. You can topstitch all the way around if you'd like.

Add a snap, button and buttonhole, or Velcro, and you are done!

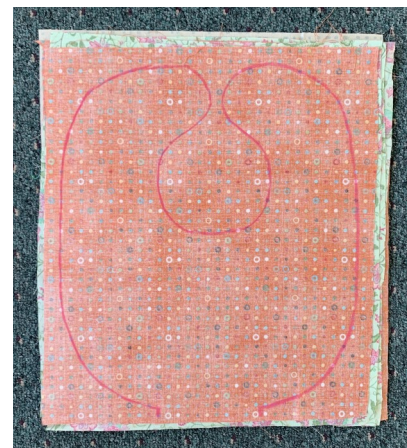
**\*\*This method is nice for this design, because keeping an accurate seam allowance with so many curves is difficult, and the narrow sections at the top would be hard to keep aligned if it was already cut out, it's more stable this way. I did this as a group project with some inexperienced sewers and it worked well!**



On the Trail  
Creations

© 2020 On the Trail Creations

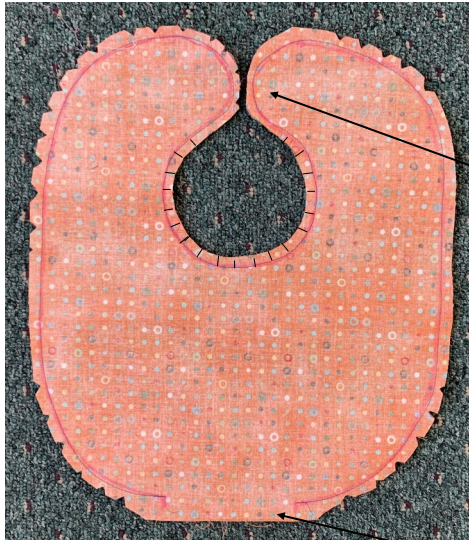
OntheTrailCreations.com



Trim or fold excess from this sheet along this edge

Leave open for turning

Start

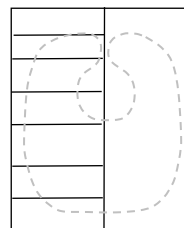
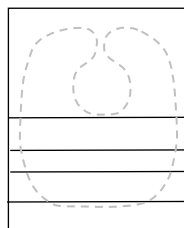
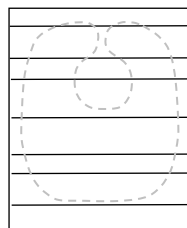


Clip and  
notch curves.

Oops, missed  
a spot!

Helps to leave extra  
seam allowance by  
the opening!

Snap placement



A few layout options, strips can be random widths,  
great for using scraps!